

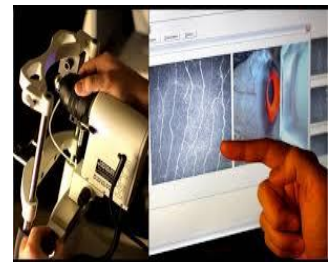
Diurnal changes and repeatability of confocal microscopy measurements on the cornea and conjunctiva

Researchers at UNSW Sydney (School of Optometry and Vision Science) are seeking volunteer participants in order to learn about day to day changes and repeatability of confocal microscopy measurements used to examine immune cells of healthy eyes.

Would the research study be a good fit for me?

The study might be a good fit for you if:

- You are aged 18 years or older.
- You are healthy, with no systemic diseases.
- Have no active eye diseases, infection or inflammation.
- You do not wear soft contact lenses regularly or do not have any history of hard contact lens wear.
- You do not have any history of eye injury or surgery.



What would happen if I took part in the research study?

If you decide to take part, you would:

- Be required to make 5 visits to the School of Optometry and Vision Science. Each visit will take approximately 20 minutes. The first visit will be considered as a baseline and you will be asked to return after 30 minutes, 2 hours, 4-6 hours and 24 hours.
- Have an eye health check.
- have images taken of the front surface of your eyes.

Will I be paid to take part in the research study?

There are no additional costs associated with participation in this research study, nor will you be paid.

Who do I contact if I want more information or want to take part in the study?

If you would like more information or are interested in being part of the study, please contact:

Name: Dr Blanka Golebiowski
Ms. Zahra Tajbakhsh
Email: z.tajbakhsh@student.unsw.edu.au
Phone: +61 2 93854750