



# What does open eye lens centration tell us about the treatment zone centration after overnight wear of orthokeratology (OK) lenses?

School of Optometry and Vision Science

Researchers at The University of New South Wales are seeking volunteer research participants to investigate what open eye lens centration tells us about the treatment zone centration after overnight wear of OK lenses.

## What are OK lenses?

Orthokeratology (OK) lenses are specially designed rigid contact lenses that provide short sightedness correction and control. They are worn during sleep to gently reshape the front surface of the eye so that clear vision is maintained without lenses during the day.

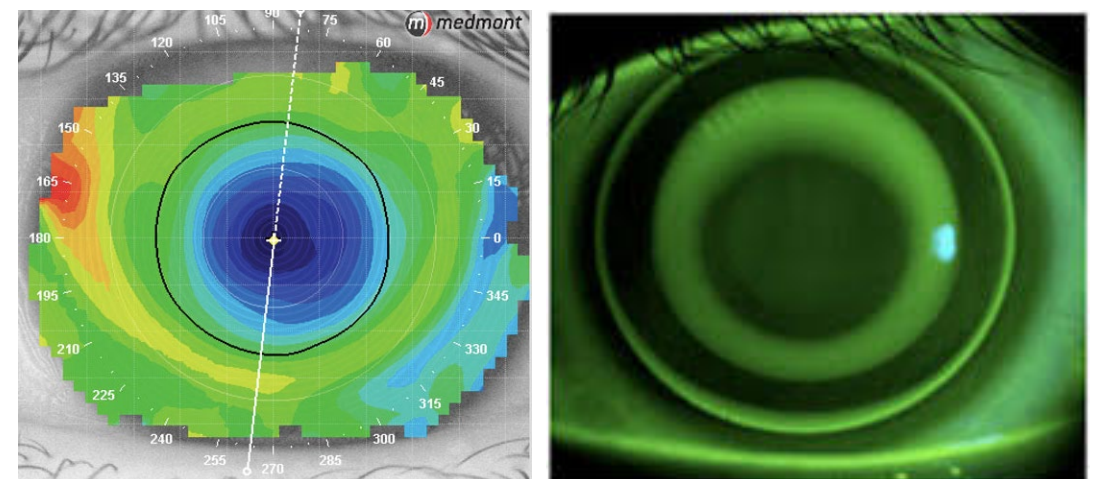
## Would the research study be a good fit for me?

*The study might be a good fit for you if:*

- You are interested in trialing OK lenses for 3 nights
- You are over 18 years of age
- You have good ocular and general health
- You have short sightedness between -1.00D and -6.00D and less than -1.50D of corneal astigmatism
- You have less than 1.00D of difference in short-sightedness between the two eyes

*The study might not be a good fit for you if:*

- You have previously worn rigid gas permeable lenses (including OK lenses)
- You have worn soft contact lenses in the week prior to study participation
- You have any contraindications to rigid contact lens wear



## What would happen if I took part in the research study?

If you decide to take part you would attend:

- **A screening visit** (to determine if you are eligible to participate in the study). We will measure your vision and the power of your eyes, check the health of the front and back of your eyes and measure the dimensions and shape of the front surface of your eyes (30 minutes)
- **Study Visit 1**: You will be fitted with a pair of OK lenses and taught how to safely use them at home. We will measure the shape of the front surface of your eyes and use photography to measure open eye lens centration. (30-45 minutes)
- **Study Visit 2** (scheduled in the morning after your first overnight wear of OK lenses): The health of the front of the eyes and power of the eyes will be checked, and the shape of the front surface of your eyes will be measured. If required, you may be given daily disposable soft contact lenses to correct any residual short-sightedness until the next study visit. (15 minutes)
- **Study Visit 3** (scheduled in the morning after your third overnight wear of OK lenses): The health of the front of the eyes and power of the eyes will be checked, and the shape of the front surface of your eyes will be measured. If required, you may be given daily disposable soft contact lenses to correct residual short-sightedness while the effect of OK lenses wear off over the next couple of days. (15 minutes)

## Will I be paid to take part in the research study?

You will receive a \$20 gift voucher after completion of the study as reimbursement for your time. You are expected to return the OK lenses to the investigators after the study.

## Who do I contact if I want more information or want to take part in the study?

If you would like more information or are interested in being part of the study please contact us

Chris Raimoto

Email: z5117246@ad.unsw.edu.au

Phone: 0469883894

Michael Tan

Email: z5117374@ad.unsw.edu.au

Phone: 0432310259

**HREC Approval Number: HC190395**

**Version dated: 17/04/2020**