

Relationship of eye movements, decision-making and eye-hand coordination in Traumatic Brain Injury

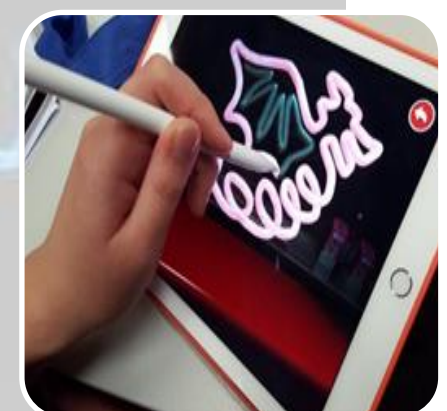


Researchers at the **UNSW School of Optometry and Vision Science** are seeking volunteer research participants to learn more about eye movements and eye-hand coordination in Traumatic Brain Injury.

Would the research study be a good fit for me?

The study might be a good fit for you if:

- Aged between 18-65 years
- Head Injury within past 12 months
- Individuals without head injury
- Normal vision with glasses and/or contact lenses
- Have no eye diseases
- Do not have seizures or neurological diseases
- Not taking medications for any neurological disorders



What would happen if I took part in the research study?

If you decide to take part, you would be asked to:

- provide information related to head injury (if only) and symptoms
- perform few computer-based eye movement tasks
- trace some patterns using an iPad
- complete a few decision-making tasks
- study measurements will take 60-90 minutes
- none of the tests will touch your eyes



Will I be paid to take part in the research study?

A Coles gift voucher of value of **\$30** will be provided.

Who do I contact if I want more information or want to take part in the study?

If you are interested in being part of the study please contact:
Revathy Mani, email: eyemovements1@gmail.com
Phone: +61 2 93854536